

Monthly Email Bulletin

July & August 2014

The KnowFife Dataset email bulletin is a monthly update and roundup of information relating to the KnowFife Dataset. The KnowFife Dataset provides access to a broad range of social, economic and health and wellbeing indicators for partners and the public in Fife. <http://knowfife.fife.gov.uk>

News

KnowFife Dataset Training!



The 2014-2015 release of training programmes run by the Health Improvement training team within NHS Fife is now available.

There are **two** dates for a half day **Introduction to the KnowFife Dataset** – see details below on page 2.

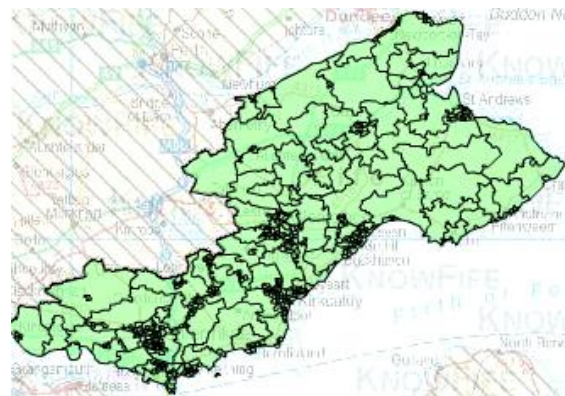
You can find out more information about the overall [training programme here](#):

Latest Data Updates

- Population Data | [2013, mid-year population estimates](#)
- Economic | [June 2014 Job Seekers Allowance data](#)
 - July 2014 data forthcoming

Recent Key Data

- Health & Wellbeing | [Breastfeeding data, 2012-13](#)
- Health & Wellbeing | [Child Health immunisations, 2012](#)
- Health & Wellbeing | [Low birth weight, 2010-12](#)
- Health & Wellbeing | [Smoking during pregnancy, 2010-12](#)
- Environment | [2011, 2012, 2013 Proximity to Derelict Land](#)
- Poverty Data | [2011 Fife Fuel poverty Data](#)
- Economic Data | [August \(Q.3\) 2013 Welfare Benefits data](#)
- Health and Wellbeing data | [2008-11 Scottish Health Survey Data.](#)



- **SIMD newsletter** | The latest **Scottish Index of Multiple Deprivation (SIMD)** newsletter was released last week. You can access this [newsletter here](#) and previous newsletters in the 'Resources' section of KnowFife Dataset under "[Deprivation > SIMD Review](#)"



General Information

➤ KnowFife on Twitter!

Using the name [@KnowFifeData](#) you can keep up to date with new data added to the KnowFife Dataset as well as new and information from wider data sources.

Key Hashtags: #KnowFifeDataset, #KnowFife, #KFD, #Fife



<https://twitter.com/KnowFifeData>

➤ Scotland's Census 2011



- To access this data from *source*, please visit [Scotland's 2011 Census pages data explorer](#).
- How 'Fife Has Changed' over the past 10 years, [can be viewed here](#).

Note: Due to the volume and nature of the Census data, it will take time before the *KnowFife Dataset* can be fully populated with Census 2011 data. This will begin to appear soon.

Training

The following training sessions are scheduled for KnowFife Dataset users (**subject to availability**):

NHS Fife Health Improvement Training Programme | "Introduction to the KnowFife Dataset"

- **Tuesday 7th October 2014** | Venue : Victoria Hospital, Kirkcaldy | [see here for booking form & more info](#)
- **Thursday 19th March 2015** | Venue : Stratheden Hospital, Cupar | [see here for booking form & more info](#)

These training sessions will give you a good overview of the KnowFife Dataset, what it contain, how you can access the data and how it can help your own work.

If you are interested in training/tutorials but unable to book a place on any of the above events, [please email the KnowFife Co-Ordinator, Chris Brown](#) to discuss options to arrange the following:

- half-day training sessions,
- live demonstrations at team of group meeting
- tutorials for small groups, teams , or individuals keen to understand the KnowFife Dataset.

This bulletin is produced by the KnowFife Dataset Co-ordinator. Previous bulletins can be accessed [here](#).

If you wish to be removed from the KnowFife Dataset distribution list, please email know.fife@fife.gov.uk.

If you have any queries or questions regarding the content of the bulletin or the KnowFife Dataset, please contact the KnowFife Dataset Co-ordinator:

Chris Brown

KnowFife Dataset Co-Ordinator

NHS Fife | Cameron Hospital | e: c.brown27@nhs.net, | t: 01592 226462 (46462)

Fife Council | Fife House | e: chris.brown@fife.gov.uk, | t: 03451 55 55 55 (ext. 440856)

